

Jeopardy

ALLERGY
MUSTS

FORMS

INCIDENTS

ALLERGY
FACTS

CAMP
STUFF

\$100

\$100

\$100

\$100

\$100

\$200

\$200

\$200

\$200

\$200

\$300

\$300

\$300

\$300

\$300

\$400

\$400

\$400

\$400

\$400

\$500

\$500

\$500

\$500

\$500

Final Jeopardy

Allergy Musts - \$100

- Read food labels
- What must staff do before giving campers any food?



Allergy Musts - \$200

- Wash tables with soap and water
- What should staff do before and after eating?



Allergy Musts - \$300

- Non food incentives or rewards
- What should be given to campers as positive reinforcements?



Allergy Musts - \$400

- Wash hands with soap and water
- What should campers do immediately upon arrival and after meals?



Allergy Musts - \$500

- Cross Contamination

- What happens when food preparation staff is not knowledgeable about potential allergens and don't wash bowls with soap and water



FORMS - \$100

- Reports any injuries or emergencies that occurred at camp
- What is an incident report form?



FORMS - \$200

- Provides staff with permission to administer over-the-counter medicine to a camper
- What is an Authorization for Medication Form?



FORMS - \$300

- Used to assess a camper with possible anaphylaxis
- What is an Allergy Action Plan?



FORMS - \$400

- Provides initial information from each camper
- What is a Camp Registration Form?



FORMS - \$500

- Has 3 color zones to guide escalating symptoms
- What is an Asthma Action Plan?



INCIDENTS - \$100

- Camper falls and starts to jerk and twitch
- What is a seizure?



INCIDENTS - \$200

- Camper breaks out in hives and swells
- What is an allergic reaction or anaphylaxis?



INCIDENTS - \$300

- Camper complains of itchy scalp and can not stop scratching
- What is Head Lice?



INCIDENTS - \$400

- Using gloves, Cleaning and washing up after an incident
- What are Universal Precautions?



INCIDENTS - \$500

- Details step-by-step to follow for specific emergencies
- What is an Emergency Action Plan?



Allergy Facts - \$100

■ 1 in 13

■ What is the number of children with food allergies in the US?



Allergy Facts - \$200

- My tongue feels full or itchy
- Who is a child that is having a possible allergic reaction?



Allergy Facts - \$300

- Trading or Sharing food during snack or lunchtime
- What should children refrain from doing?



Allergy Facts - \$400

- 1/3 of all children with food allergies
- Who are children who have been bullied?



Allergy Facts - \$500

- Milk, eggs, wheat, soy, tree nuts, shellfish, peanuts, fish
- What are the foods that cause 90% of food allergies in the US?



CAMP STUFF - \$100

- Provides staff proper orientation in all areas prior to the start of camp
- What is Staff Training?



CAMP STUFF - \$200

- Contains all necessary items and plans in case of an Incident
- What is an Emergency Bag?



CAMP STUFF - \$300

- Provides delineated steps, phone lists and plans
- What is a 9-1-1 System?



CAMP STUFF - \$400

- Series of simple, life-saving medical techniques that a layman can be trained to perform
- What is First-Aid or CPR?

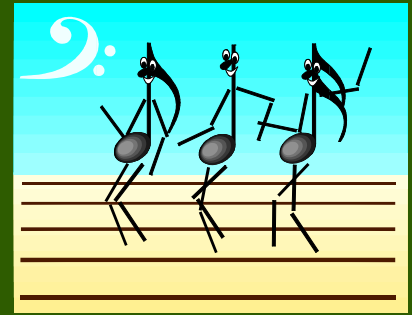


CAMP STUFF - \$500

- Responsible for maintaining health concerns and emergency action plans current
- Who is the Camp Director?



Final Jeopardy



- Funding is made possible to run our summer camps.
- What is Miami-Dade Department of Cultural Affairs?

